

# Crete Rx™

## Polished Concrete Maintenance System



The  
Right  
Prescription

# Table of Contents

[Page 1. Polished Concrete Overview](#)

[Page 6. A simple system – extraordinary results](#)

- [A Betco Innovation](#)
- [System Technology](#)
- [System Maintenance Process, Products and Tooling](#)

[Page 19. Accessories](#)

[Page 20. Equipment](#)

[Page 22. Measuring](#)

[Page 24. Auditing](#)

[Page 25. Support Materials](#)

[Page 26. Cost Estimator](#)

[Page 27. Before and After](#)



# Why Polished Concrete?

- Initial grinding/polishing cost vs. reduced maintenance
- No stripper or finish cost
- No/minimal maintenance



# Market Reality

No substrate is maintenance free.



Wear patterns and pitting develop



Staining and chemical etch

# Solutions with Problems

## Other solutions:

- Protection with coating (guard)
- Maintenance DIP programs
- Restoration (etch removal) products

## Issues

- Maintenance shift
- Wear and removal issues
- Stain and etch issues
- Increased complexity and labor intensive - 6+ tools, multiple steps and multiple passes for each step
- Costly



# Crete Rx System Advantages

## A Simple System with Extraordinary Results

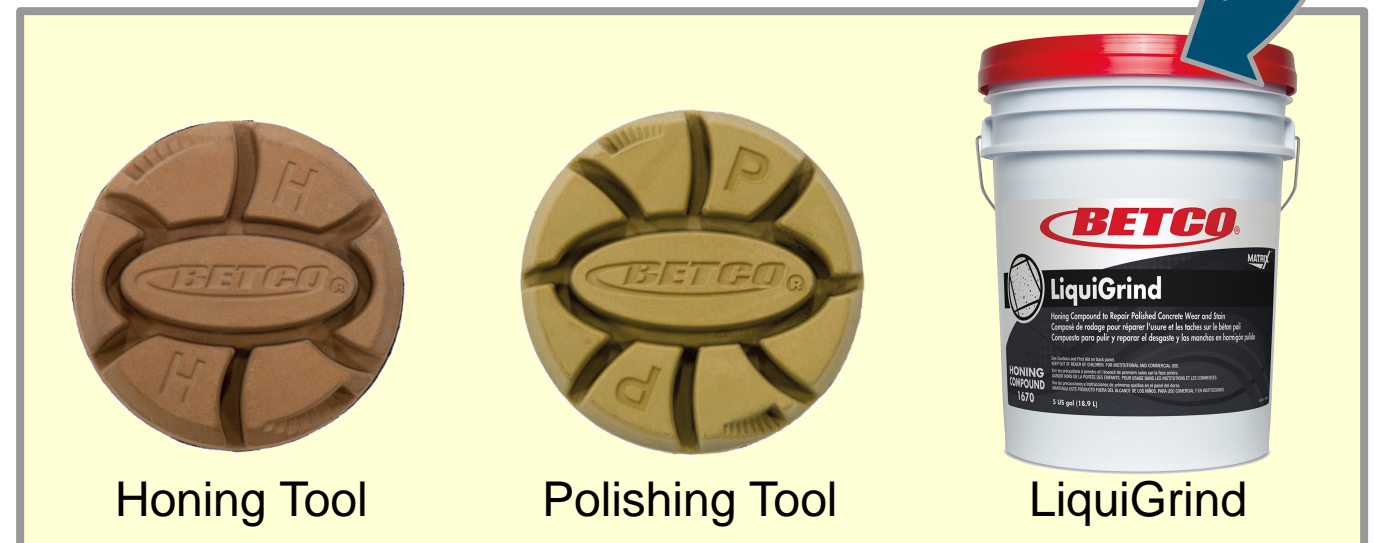
- **Simplicity** – Only two tooling steps and pad/cleaner maintenance
- **Innovative Protection** – Sealant infused components fill concrete to protect from stains and wear
- **Depth of Gloss** - Protected floors show unparalleled distinction of image (no topical finish)



# A Betco Innovation

## A Simple System...

- Traditional polishing steps, starting from a very aggressive cut, can take as many as six to eight steps to complete.
- Crete Rx only requires two (2) tooling steps and one (1) chemical product to do the job.

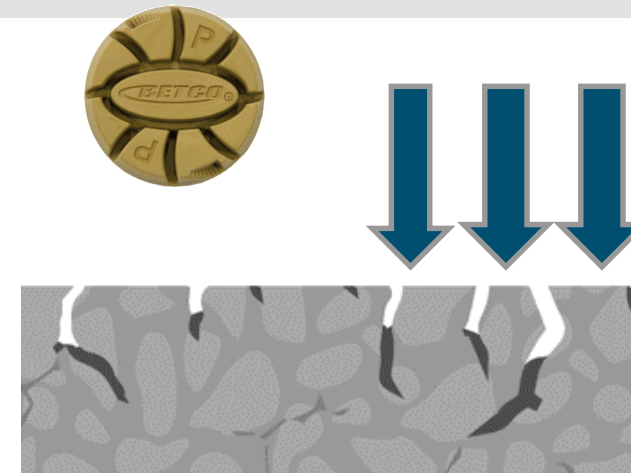


# System Technology

## Extraordinary Results.



Crete Rx Honing Process



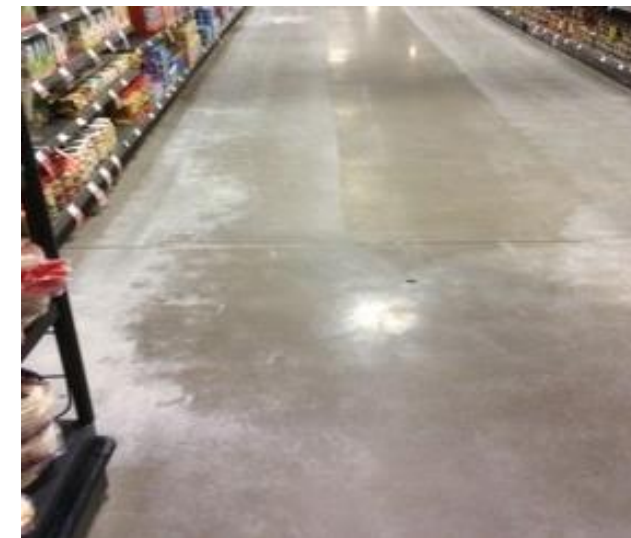
Crete Rx Polishing Process



Crete Rx Stain Defense



Etched / Worn  
Polished Concrete



# System Maintenance Process

The Crete Rx System brings the same principles of maintaining VCT floors to polished concrete and terrazzo with specially designed chemicals and accessories. By using the Crete Rx System you can return any polished concrete surface to a clean, deep gloss look. Crete Rx System Sealant Infused products, cleaning and burnishing pads as well as polishing tools, effectively fills porous concrete to build superior depth of gloss while providing excellent stain protection.

## Routine Maintenance

### Floor Condition

- Minimal wear
- Moderate gloss

- Clean with autoscrubber & Sealant Infused pads
- Daily maintenance
- Sealant resin is ground into floor to build gloss and stain protection



**Step 1**  
Scrub using SI Cleaning pad & Densiclean cleaner\*

## Interim Maintenance

### Floor Condition

- Moderate wear
- Minimal gloss

- Dry scrub with polishing tool and Stain Defense
- Follow with Routine Maintenance procedures



**Step 1**  
Dry scrub with SI polishing tool



**Step 2**  
Apply Stain Defense penetrating sealer



**Step 3**  
Burnish with SI Burnishing pad



**Step 4**  
Scrub using SI Cleaning pad & Densiclean cleaner\*

## Reset Step

### Floor Condition

- Excessive finish build-up
- Pitting
- Extreme wear

- Utilize Reset tool and LiquiGrind to "reset" concrete floors
- Follow with Restorative Maintenance procedure



**Reset**  
Scrub with LiquiGrind & Reset tool.

## Restorative Maintenance

### Floor Condition

- Excessive wear
- Stain & etch
- No gloss

- Honing tool and LiquiGrind used to remove toughest stain and etching/wear
- Follow with Interim & Routine Maintenance procedures



**Step 1**  
Scrub with LiquiGrind & honing tool



**Step 2**  
Apply Densifier



**Step 3**  
Dry scrub with SI polishing tool



**Step 4**  
Apply Stain Defense penetrating sealer



**Step 5**  
Burnish with SI Burnishing pad



**Step 6**  
Scrub using SI Cleaning pad & Densiclean cleaner\*

# Reset Step for Extreme Floor Conditions

## Floor Condition

- *Excessive finish build-up*
- *Pitting*
- *Extreme wear*

## Process

- *Utilize reset tool and LiquiGrind to 'reset' concrete floors*
- *Follow with Restorative Maintenance procedure*

*NOTE: This step is ONLY required on heavily worn concrete or as final step to remove excessive finish build up, pitting, or steel trawl floors. Do NOT use for Stain/Etch Remediation.*



LiquiGrind  
167005-00

## 1 Step

**Scrub with LiquiGrind  
and Reset Tool**



Reset Tool  
E84132-00

# Restorative Maintenance

## Floor Condition

- Excessive wear
- Stain and etch
- No gloss

- Honing tool and LiquiGrind remove the toughest stain and etching
- Follow with Interim and Routine Maintenance procedures
- [Crete Rx™ Restorative Maintenance Procedures Video](#)



**Step 1**  
Scrub with LiquiGrind  
and honing tool



**Step 2**  
Apply Densifier



**Step 3**  
Dry scrub with SI  
polishing tool



**Step 4**  
Apply Stain Defense  
penetrating sealer



**Step 5**  
Burnish with SI  
burnishing pad



**Step 6**  
Scrub using SI  
cleaning pad and  
DensiClean

# Free Abrasive Technology

## LiquiGrind

- Nanoparticle abrasive
- Removes wear and etching easily
- Works with honing tool to grind out excessive wear and staining

## Honing Tool

- Use with LiquiGrind to prepare concrete for polishing step by removing imperfections and smoothing surface

## Maintenance Phase

- **Restorative Maintenance:** When LiquiGrind is used with the honing tool, it removes moderate etching and wear



LiquiGrind  
167005-00

Honing Tool  
E84133-00

# Interim Maintenance

## Floor Condition

- Moderate wear
- Minimal gloss

- *Dry scrub with polishing tool and Stain Defense*
- *Follow with Routine Maintenance procedures*
- *Crete Rx™ Interim Maintenance Procedures Video*



### Step 1

*Dry scrub with SI  
polishing tool*



### Step 2

*Apply Stain Defense  
penetrating sealer*



### Step 3

*Burnish with SI  
burnishing pad*



### Step 4

*Scrub using SI  
cleaning pad and  
DensiClean*

# Sealant Infused Technology

## Polishing Tool

- Sealant infused technology – used in polishing step to establish a polished look

## Stain Defense

- Penetrating polymers seal off open pores
- Resists staining and etching
- Interacts with sealant infused polymers
- Creates uniform, continuous protective surface

## SI Burnishing Pads

- Sealant infused technology – fills porous concrete with sealant, pushing the sealant into the concrete itself, not a topical film
- Excellent protection and deep gloss without floor finish

## Maintenance Phase

- **Interim Maintenance:** Used together provides superior stain protection and gloss



Stain Defense  
167205-00

Polishing Tool  
E84134-00

Crete Rx  
SI Burnishing  
Pads

# Routine Maintenance

## Floor Condition

- *Minimal wear*
- *Moderate gloss*

## Process

- *Clean with autoscrubber and sealant infused pads*
- *Sealant resin is ground into floor to build gloss and stain protection*
- *Daily maintenance*
- [Crete Rx™ Routine Maintenance Procedures Video](#)



DensiClean  
67912-00



Crete Rx  
SI Cleaning Pad

## 1 Step

*Scrub using SI cleaning pad and DensiClean.*

# A New Evolution in Polished Concrete Maintenance

## DensiClean

- Densifying cleaner contains proprietary silica chemistry
- Suspends the toughest soils and reduces dust
- Maintains concrete hardness

## SI Cleaning Pad

- Sealant infused pad fill porous concrete with sealant, pushing the sealant into the concrete itself, not a topical film
- Excellent protection and deep gloss without floor finish

## Maintenance Phase

- **Routine Maintenance:** Used together continually builds gloss while cleaning



DensiClean  
67912-00



Crete Rx  
SI Cleaning Pad

# Stain Remediation

## Floor Condition

- *Stained areas*

- [Crete Rx™ Stain Remediation Procedures Video](#)



### Step 1

Saturate concrete with DensiClean



### Step 2

Apply LiquiGrind



### Step 3

Hone saturated area with Honing Tool



### Step 4

Clean area with DensiClean



### Step 5

Apply Densifier



### Step 6

Polish dried area with Polish Tool



### Step 7

Clean area with DensiClean



### Step 8

Apply Stain Defense



### Step 9

Burnish with SI burnishing pad

# Stain Remediation

The Concrete Stain Removal Kit brings the components of the Crete Rx system into one convenient place for spot stain remediation.

## Kit contains

- 6 qts. of LiquiGrind
- 4 qts. of Densifier
- 2 qts. of Stain Defense



Concrete Stain Removal Kit  
92411-00

# Stain Remediation – Accessories

## Crete Rx CRP

Dual-action counter-rotating plate significantly enhances the performance and productivity of **standard floor machines** for small areas and remediation.



E84143-00

Perform the Crete Rx system in half the time versus a standard pad driver.  
Significantly reduce passes and get more projects done.

Adds **50** pounds and up to **600** RPM of counter-rotating tool motion.  
Floor machines now deliver a higher-depth of gloss and remove stains, etches and scratches.

16-inch, **solid cast iron and stainless steel** construction.  
Durability for years of Crete Rx projects.

## Crete Rx Tool Adapter Pad

This tool adaptor pad allows Crete Rx tools to be attached to single and dual-disk **Auto Scrubbers** up to 32-inch or 17 and 20-inch Floor Machines.



E80000-00

Double-sided hook-and-loop attaches to standard pads and Crete Rx tools.  
Quickly make auto scrubbers and floor machines Crete Rx machines.

One part number for 13-20-inch pads.  
20-inch can be cut-down to fit smaller diameters.

Indicators make it simple to identify where to put the Crete Rx tools.  
No second guessing – attach and get started.

## Concrete Maintenance Stain Removal Kit



Kit Item #92411  
12 variety Qts/cs

*With quart sized containers of LiquiGrind, Densifier, & Stain Defense, the Concrete Maintenance Stain Removal Kit brings all the components of the Crete Rx system into one convenient place for spot stain remediation.*

- LiquiGrind removes wear and etching
- Densifier strengthens and hardens polished concrete
- Stain Defense penetrates open pores & creates uniform, continuous protective surface

## Concrete Daily Maintenance



DensiClean™

12 - 32 oz. Bottles (#67912)  
4 - 2 L Fast Draw (#67947)

*With the unique chemistry in Betco's DensiClean product, free lime content in polished concrete is greatly reduced, thus also reducing labor time spent on dust mitigation compared to standard neutral cleaners.*

- Advanced cleaning formula with proprietary silicate chemistry
- Interaction with free lime in concrete cuts down on dust mitigation time spent
- Suspends the toughest soils and maintains a safe pH

## Accompanying Products



SI Cleaning Pads:

11" - 5/CS (#E84111)  
12" - 5/CS (#E84112)  
13" - 5/CS (#E84113)  
14" - 5/CS (#E84114)  
15" - 5/CS (#E84115)  
16" - 5/CS (#E84116)  
17" - 5/CS (#E84117)  
20" - 5/CS (#E84120)

SI Burnishing Pads:

21" - 5/CS (#E84121)  
24" - 5/CS (#E84124)  
27" - 5/CS (#E84127)



Crete Rx™ Tools

Honing Tool - 3/CS (#E84133)  
Polishing Tool - 3/CS (#E84134)

# Equipment – CM30

## Get Into Crete Rx At Over 40% Less.\*

Low investment *generates approximately \$0.40/sqft in savings with Crete™ Rx pre-polished concrete floors.*

Savings *from first 35,000 sqft pays for CM30.*

Beautiful, glossy, durable floors *easily delivered with dual-direction, high RPM action at 330 lb down pressure.*

## Maintain your own concrete and shine.

*The Crete Rx CM30 Pre-polished Concrete Maintainer allows you to bring the enhanced benefits of a Crete Rx floor at a very low cost - allowing you to do it yourself and save. Plus, you can be confident with the CM30's rugged construction and industry's best warranty.*

\* Versus traditional polishers

[Operation Manual](#)

[DIY Sell Sheet](#)

[BSC Sell Sheet](#)

SPECIFICATIONS		Crete Rx™ CM30 Pre-polished Concrete/Terrazzo Concrete Maintainer	
Productivity (sq. ft.) Per Hour		Up to 2,250 ft <sup>2</sup> /hr	
Path Width:		30-inch	
Satellite qty / size:		(3) 10-inch tool drivers	
Satellite speed:		250 RPM	
Head speed:		1,295 RPM	
Head pressure:		330 lb	
Motor:		18 HP	
Propane tank:		20 lb / 4.6 gallon	
Frame construction:		Thick, powder-coated steel	
Machine weight (empty tank):		480 lb	
Machine Dimensions (L X W X H)		43 in x 32 in x 42 in	
Warranty:		3-years Parts / Labor Engine 2-years <i>See full warranty policy for additional details.</i>	



CM30  
E29805-00

# Equipment – CP30

## Highest depth of gloss. Up to 10X faster.

Dual-direction floating head at high RPM produces the highest gloss.  
*Delivers uniformity and excellent reflection.*

Aggressive down pressures up to 710 lbs. hones and polishes in as little as 1-2 passes.  
*Auto scrubbers can take 10 or more passes.*

Enjoy years of safe, low emission operation.  
*Tough ¼" aluminum frame carries a "concrete grade" gearbox and durable 22HP EPA/CARB certified engine.*

## Do more projects that make you shine.


*The CP30's aggressive action, as part of Betco's exclusive Crete Rx™ concrete system, builds unmatched depth of gloss in the shortest amount of time. This will allow you to complete more projects and shine in the process.*

### Applications:

- Previously polished concrete and terrazzo floors
- Restorative honing
- Interim maintenance polishing

[Operation Manual](#)  
[Sell Sheet](#)

SPECIFICATIONS		Crete Rx™ CP30 Concrete / Terrazzo Polishing Machine	
Productivity (sq. ft.) Per Hour	Up to 3,375 ft <sup>2</sup> /hr		
Path Width:	30-inch		
Satellite qty / size:	(3) 13-inch tool drivers		
Satellite speed:	520 RPM		
Head speed:	1,040 RPM		
Head pressure:	615 lb		
- Without Water	710 lb		
- With Water			
Motor:	22 HP		
Propane tank:	20 lb / 4.6 gallon		
Solution tank:	11 gallon		
Frame construction:	¼" Aluminum		
Machine weight (empty tank):	950 lb		
Machine Dimensions (L X W X H)	75 in x 30 in x 48 in		
- Operating position	105 in x 30 in x 52 in		
- Transport position			
Warranty:	3-years Parts / Labor Engine 2-years <i>See full warranty policy for additional details.</i>		



CP30  
E29810-00

# Equipment – Optima XR Burnishers

## Up To 27% More Fuel Efficient

Exclusive fuel delivery system.

*The new Optima XR reduces refills by up to 44 tanks per year versus the leading competitor; saving customers up to \$1,100 annually.*

Top of class performance.

*The Optima XR's increased pad speed and custom riser plates create the brightest, widest burnishing path..*

Made in USA

*Ensures high quality assurance with industry leading 3-year warranty and available quick-ship machines and service parts.*

## Reliable, simple value.

*The Optima XR propane burnishers boast durable cast aluminum construction, low oil emergency shut-off and a Kawasaki 603cc V-Twin engine for years of worry-free operation. Simple operation and maintenance plus an excellent price make them high value.*

[Savings Calculator](#)  
[Operation Manual](#)  
[Sell Sheet](#)

SPECIFICATIONS	Optima XR 21	Optima XR 27
Productivity (sq. ft. per hour):	26,250	33,750
Pad Size:	21 Inch	27 Inch
Pad Speed:	1,825 RPM	1,450 RPM
Engine:	Kawasaki 603cc V-Twin	Kawasaki 603cc V-Twin
Engine Speed - MAX:	3,600 RPM	3,600 RPM
Fuel Delivery System:	Exclusive, High-Efficiency	Exclusive, High-Efficiency
Exhaust System:	Catalytic Muffler	Catalytic Muffler
Starting System:	12V Battery	12V Battery
Deck Construction:	Aluminum Casting w/ Powder Coat	Aluminum Casting w/ Powder Coat
Sound Level:	< 85 dBa	< 85 dBa
Machine Weight:	211 lb	228 lb
Machine Dimensions (L X W X H)	49 in x 22.5 in x 37.5 in	56 in x 29.5 in x 37.5 in
Machine Certifications:	EPA / CARB	EPA / CARB
Optional Accessories		
Centrifugal Clutch:	Yes	Yes
Emission Monitoring:	Yes	Yes
Dust Control:	No	Yes
Warranty:	3 year parts and labor. Kawasaki engines warrantied by Kawasaki for 2 years. See full warranty policy for additional details.	3 year parts and labor. Kawasaki engines warrantied by Kawasaki for 2 years. See full warranty policy for additional details.



Optima XR  
E12800 - 21 inch  
E12830 - 27 inch



# Measuring

- Various types of profilometers measure concrete smoothness.
- Devices are hand held portable texture meters and are easily used on the job site.
- Proved to be the best method for dependable and accurate meters to use for evaluating smoothness/roughness.
- Meets CSDA ST 115 polishing standard



# Why Measure?

- Track and validate the Crete Rx Process
- Quantify improvement
- Monitor maintenance programs
- Floor auditing
- Comply with CSDA ST 115

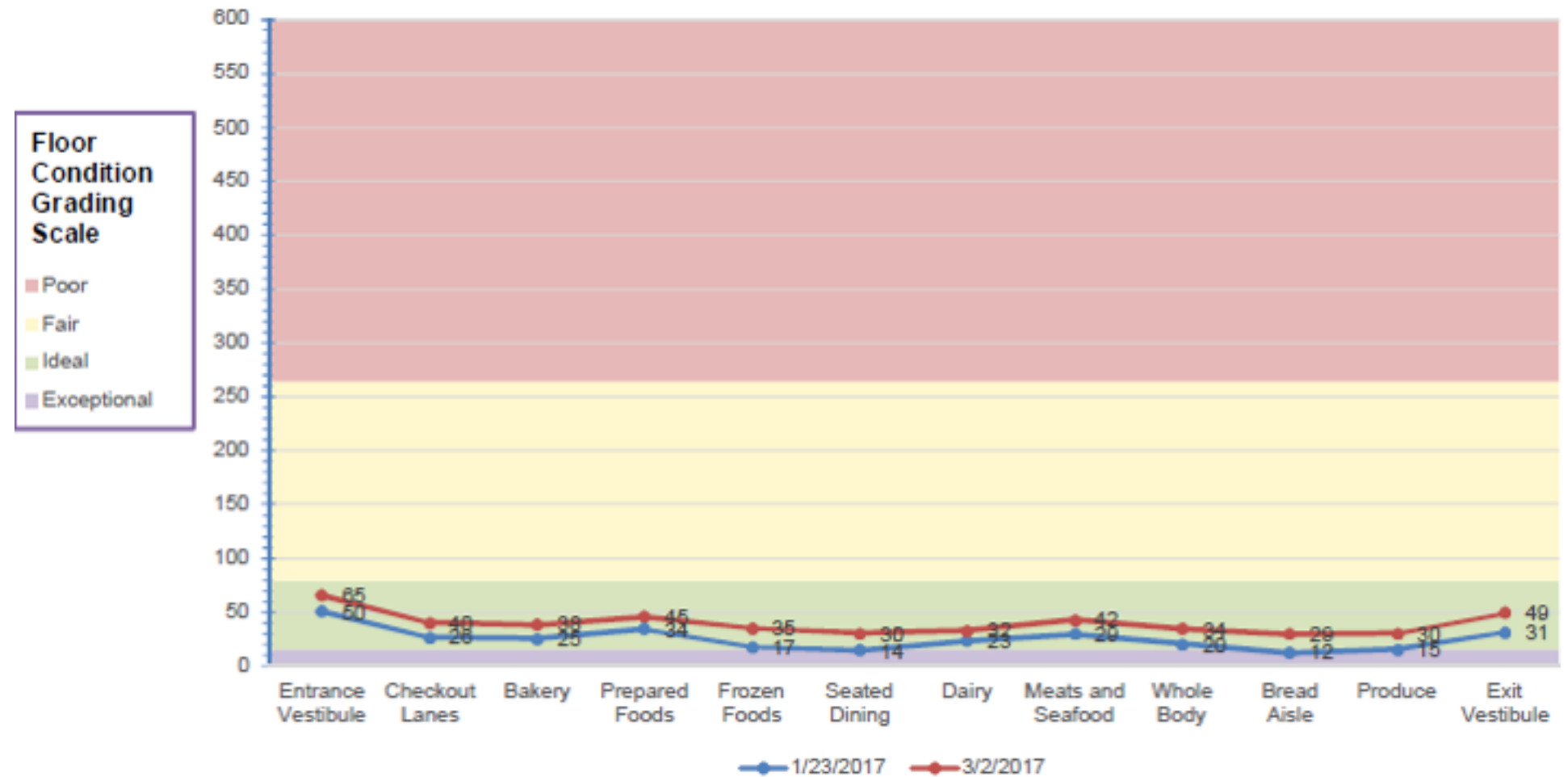


# Auditing Tools

## Floor Assessment

Using the profilometer in accord with customer/facility specific procedures, a maintenance schedule can be produced.

- Use profilometer to determine floor conditions
- Determine customer expectations and pain points
- Provide data over time on floor conditions and determine maintenance needs



# Support Materials


Crete Rx support materials are available to use as a sales tool as well as to validate all phases of the Crete Rx Maintenance process.

- [Crete Rx Brochure](#)
- [Crete Rx CP30](#)
- [Crete Rx Cost Estimator](#)
- [Crete Rx Routine Maintenance Wall Chart](#)
- [Site Surveys and Auditing Tools](#)
- [Videos](#)
  1. [Crete Rx Polished Concrete and Terrazzo Maintenance System](#)
  2. [Crete Rx Routine Maintenance Procedures](#)
  3. [Crete Rx Interim Maintenance Procedures](#)
  4. [Crete Rx Restorative Maintenance Procedures](#)
  5. [Crete Rx Stain Remediation Procedures](#)
  6. [2017 Crete Rx Accessories](#)



# Cost Estimator

Whether it is for a Reset, Routine, Interim or Restorative Maintenance project, the Crete Rx Cost Estimator will help you determine the equipment needed, proper quantities of tooling and product for the job. It will also help you estimate labor costs.



**IMPORTANT instructions you must follow to get accurate ESTIMATED RESULTS.**

Orange cells show the quantity required to complete the project. This is **ONLY a GUIDE**. Costs are estimated based on **YOUR** entries in **STEP 5**. **Adjust the QTY in STEP 5 AS NEEDED.**

Cost estimates are based on data in **YELLOW** cells. Follow the numbered **STEPS 1 - 6 IN SEQUENTIAL ORDER** and complete information in ALL of the yellow cells. *NOTE: Regardless of the number of tools a machine supports, e.g. 12, 9, 6, etc., the order quantities are the same. Efficiencies decline as the number of tools, a machine holds, declines. Ordering the same quantities makes up for this declination. Also, labor needs increase when machines that hold fewer tools are being used.*

Cost information is displayed in the green cells. **TO ADJUST PRICING:** Go to the **Review Tab** and click on **Unprotect Sheet**. **WARNING:** Unprotecting the worksheet opens up the possibility of compromising the data.

**IMPORTANT Betco Best Practice**  
This Estimator file is updated frequently. **DO NOT SAVE** or **REUSE** this Estimator. **ALWAYS** return to Crete Rx on Betco.com [Crete Rx Estimator on Betco.com](#) to get an updated Estimator.

---

**1 Select Maintenance Phase:** Interim Maintenance

**3 Select Your Machine Type:** CM30 or CP30

**4 Select 1 Cleaning and 1 Burnishing Pad:**

**2 Enter Total Square Footage:** 30,000

**USE ONLY as a GUIDE**      **ENTER ORDER QTYs HERE \***

**5 QTY to order \***

Tooling	MSRP Price Per Case	QTY Per Case	UOM	SQFT Coverage by Tool	Case QTY Required to Complete the Project	QTY to order *	Cost	Productivity Hours
Polishing Tool (E84134-00)	\$96.00	3	case	8,000	16	32	\$3,072.00	7,000
Tool Holder (E84130-00)	\$63.88	3	case	150,000	4	16	\$1,022.08	N/A
						16	\$0.00	
						4	\$0.00	

Products	MSRP Price Per Case	QTY Per Case	UOM	SQFT Coverage by Pad	Case QTY Required to Complete the Project	QTY to order *	Cost	Productivity Hours
Cleaning Pad, 11" (E84111-00)	\$84.80	5	case	200,000	1	1	\$84.80	20,000
Burnishing Pad, 27" (E84127-00)	\$86.87	2	case	200,000	1	1	\$86.87	20,000

Products	MSRP Price Per Case	QTY Per Case	UOM	SQFT Coverage by Pail	Pail QTY Required to Complete the Project	QTY to order *	Cost	Productivity Hours
Stain Defense (167205-00)	\$498.78	1	5 gal pail	20,000	2	3	\$1,496.34	2,500
						6	\$0.00	
						2	\$0.00	

Auxiliary Items	MSRP Price Per Case	QTY Per Case	UOM	SQFT Coverage by Case	Case QTY Required to Complete the Project	QTY to order *	Cost
CM30 (E29805-00)	\$13,930.00	1	each	N/A	Per Recommendation <sup>1</sup>	0	\$0.00
CP30 (E29810-00)	\$24,995.00	1	each	N/A	Per Recommendation <sup>1</sup>	0	\$0.00
Crete Rx™ Stain Removal Kit (92411-00)	\$272.28	12	case	N/A	Per Recommendation <sup>1</sup>	0	\$0.00
CRP (E84143-00)	\$833.00	1	case	N/A	Per Recommendation <sup>1</sup>	0	\$0.00
DensiClean - 12-32 oz. (67912-00)	\$155.26	12	case	N/A	Per Recommendation <sup>1</sup>	0	\$0.00
DensiClean - 4 - 2L FastDraw (67947-00)	\$233.52	4	case	N/A	Per Recommendation <sup>1</sup>	0	\$0.00
Polishing Tool Spacer (E84173-00)	\$12.92	3	case	N/A	Per Recommendation <sup>1</sup>	0	\$0.00
TAP (E80001-00)	\$149.00	1	case	N/A	Per Recommendation <sup>1</sup>	0	\$0.00
Velcro Disk Replacement Kit (E84144-00)	\$4.50	6	case	N/A	Per Recommendation <sup>1</sup>	0	\$0.00

<sup>1</sup>Auxiliary item quantities are ordered as needed, please reach out to your Betco sales representative for their recommendation.

**6 Total ESTIMATED Project Cost** \$5,762.09

**Tooling, Pads, and Product Cost** \$5,762.09

**Tool Cost Per Square Foot** \$0.19

**Results are an ESTIMATE ONLY.**

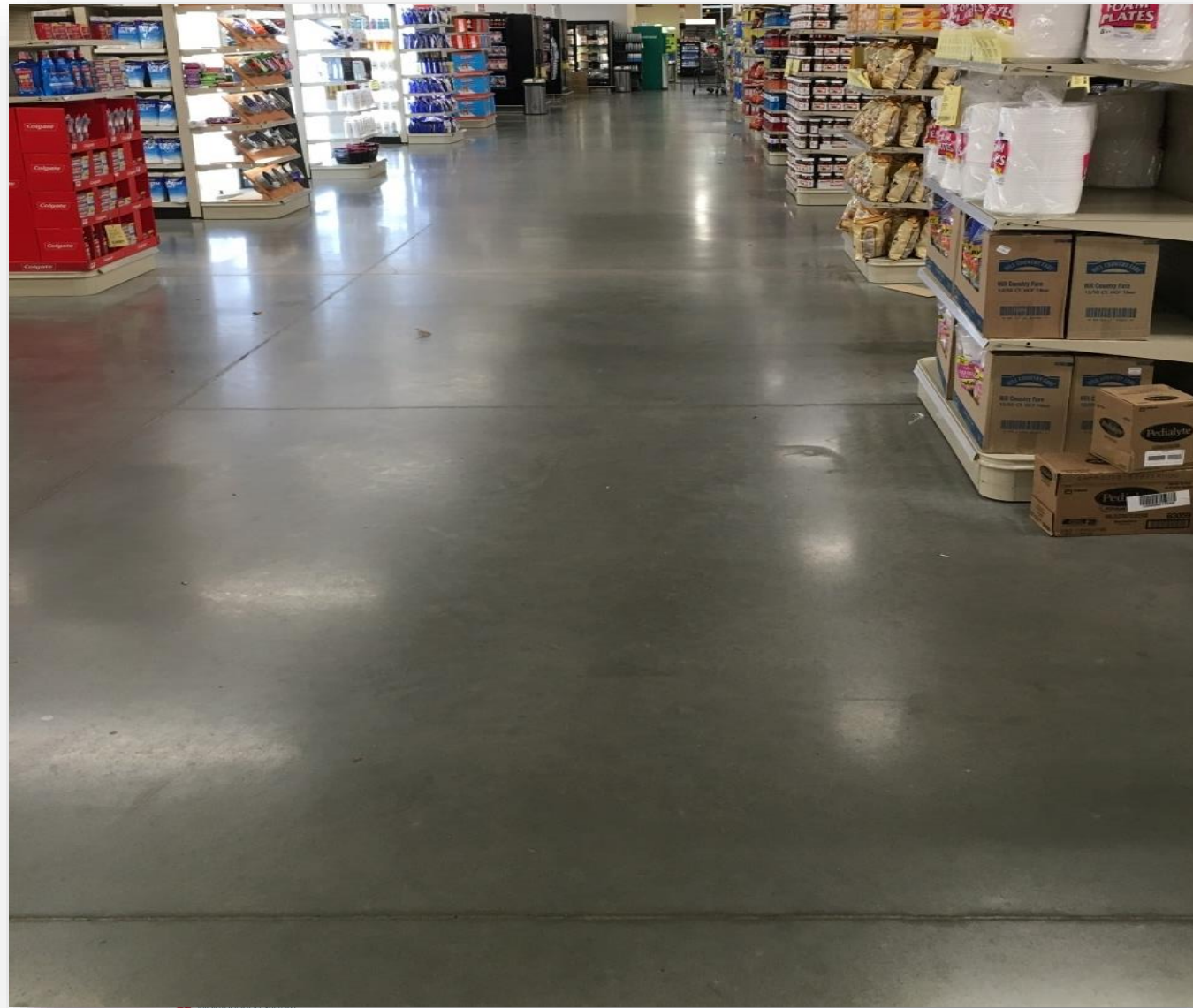
# Complete System Example (CP30)

A “full” floor look such as below is the goal (without finish).



# Interim Maintenance Example(Autoscrubber)

Race Track Wear Aisle Before



Race Track Wear Aisle After



# Interim Maintenance Example (Autoscrubber)

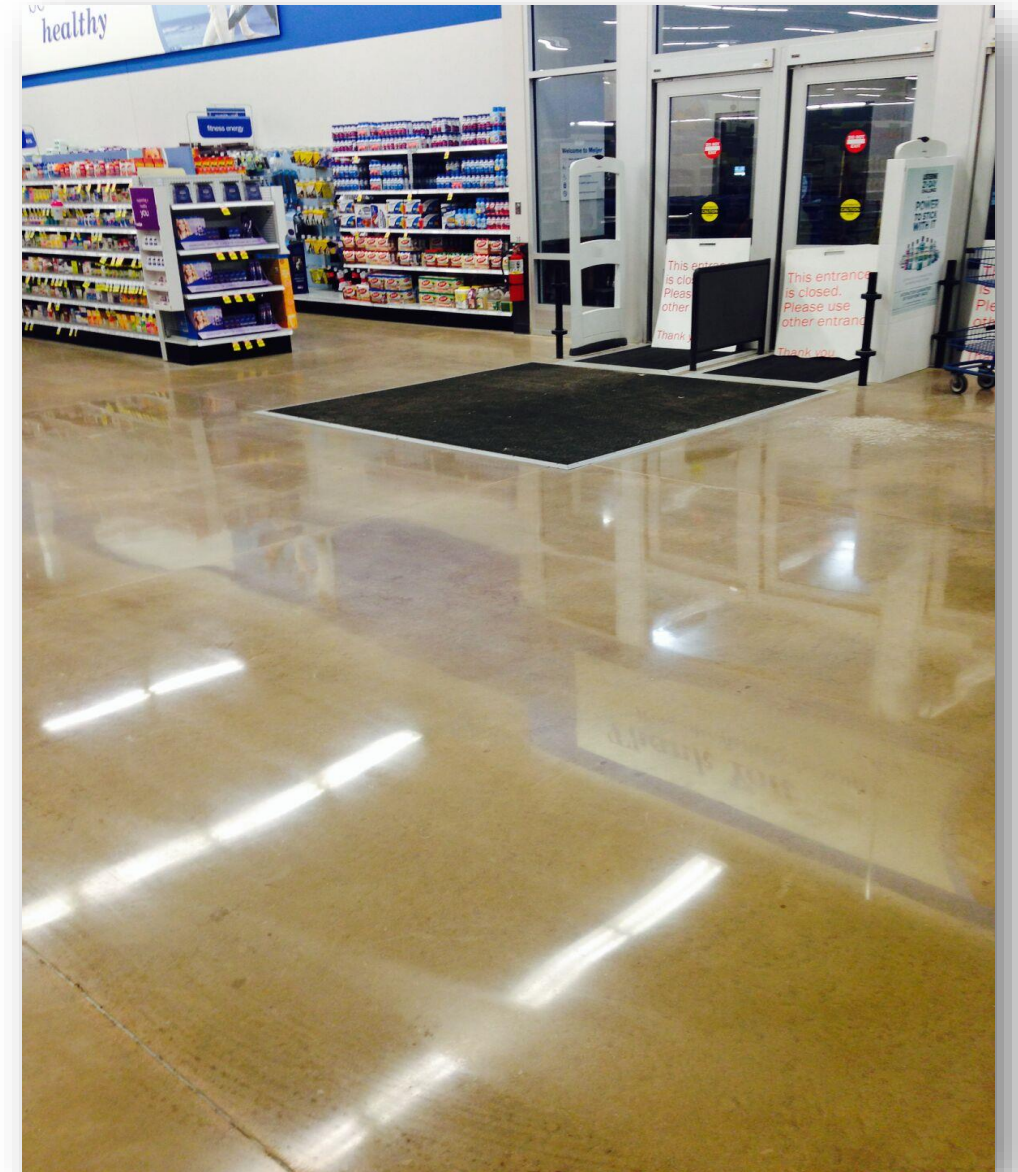
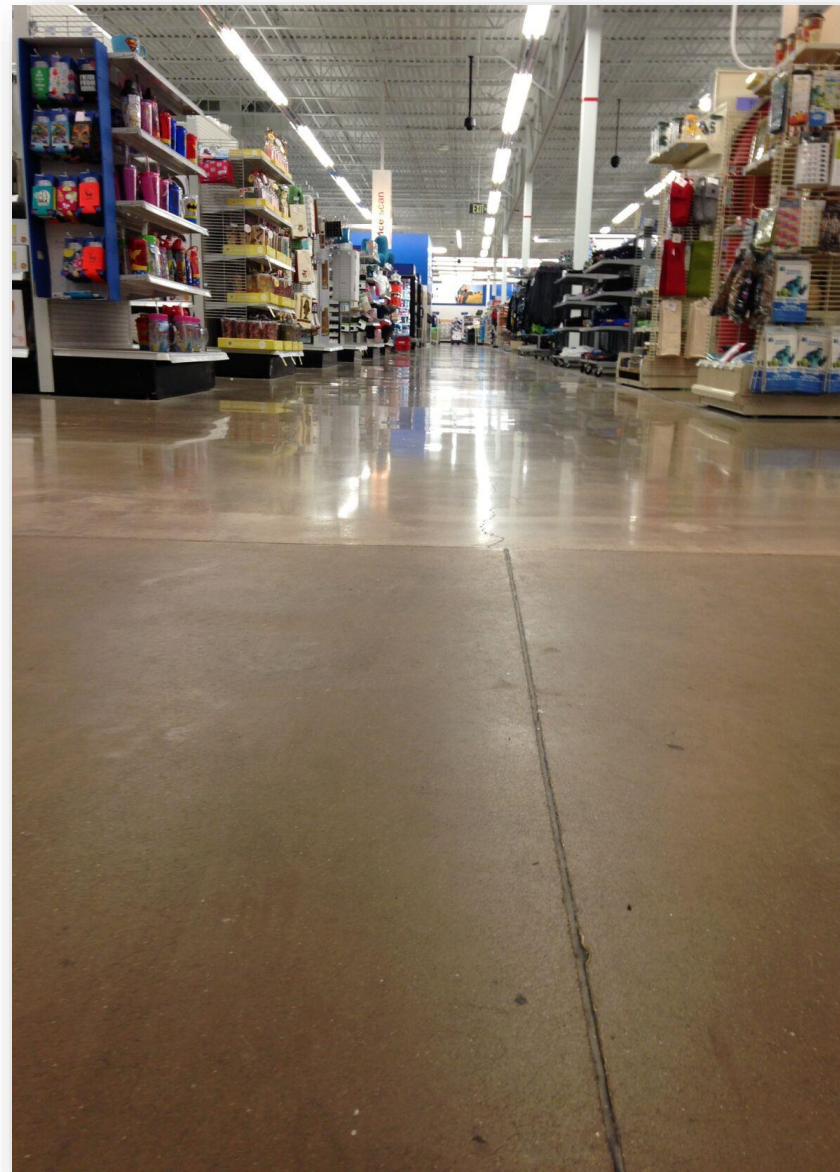
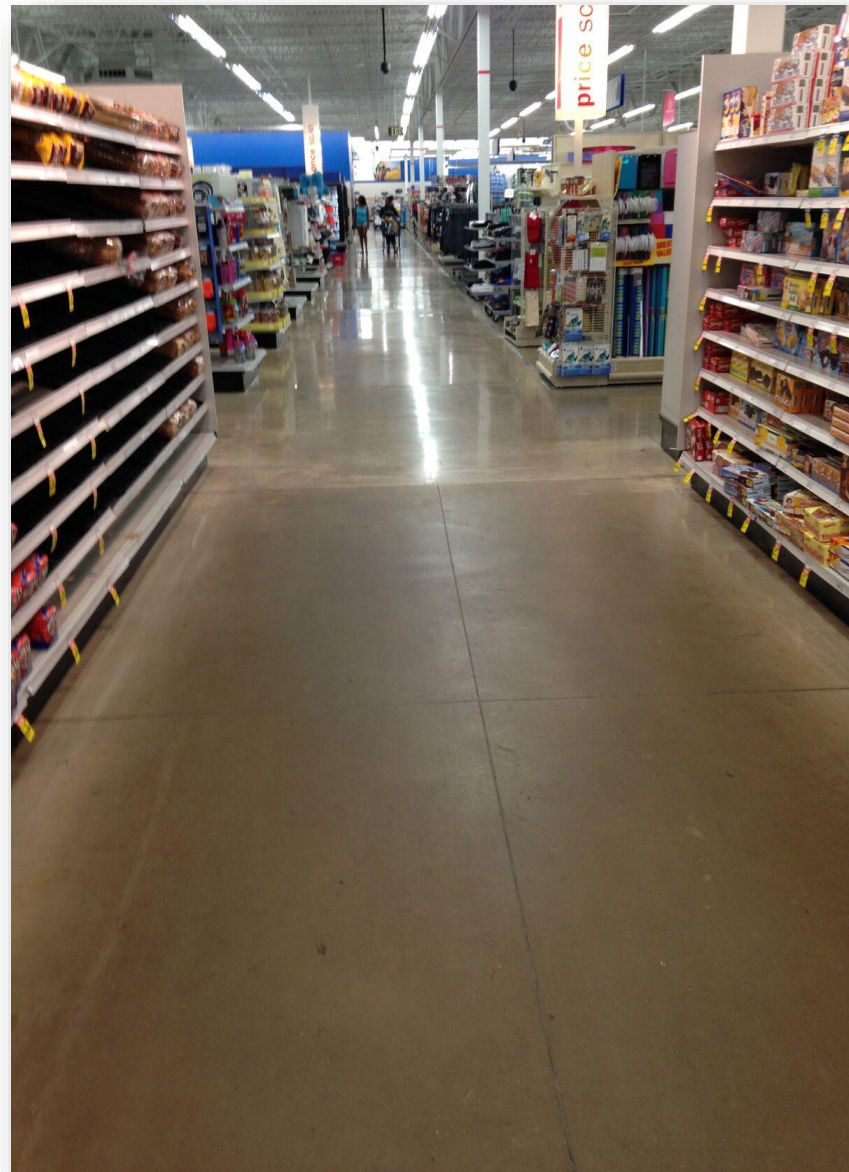
Race Track Wear Aisle Before



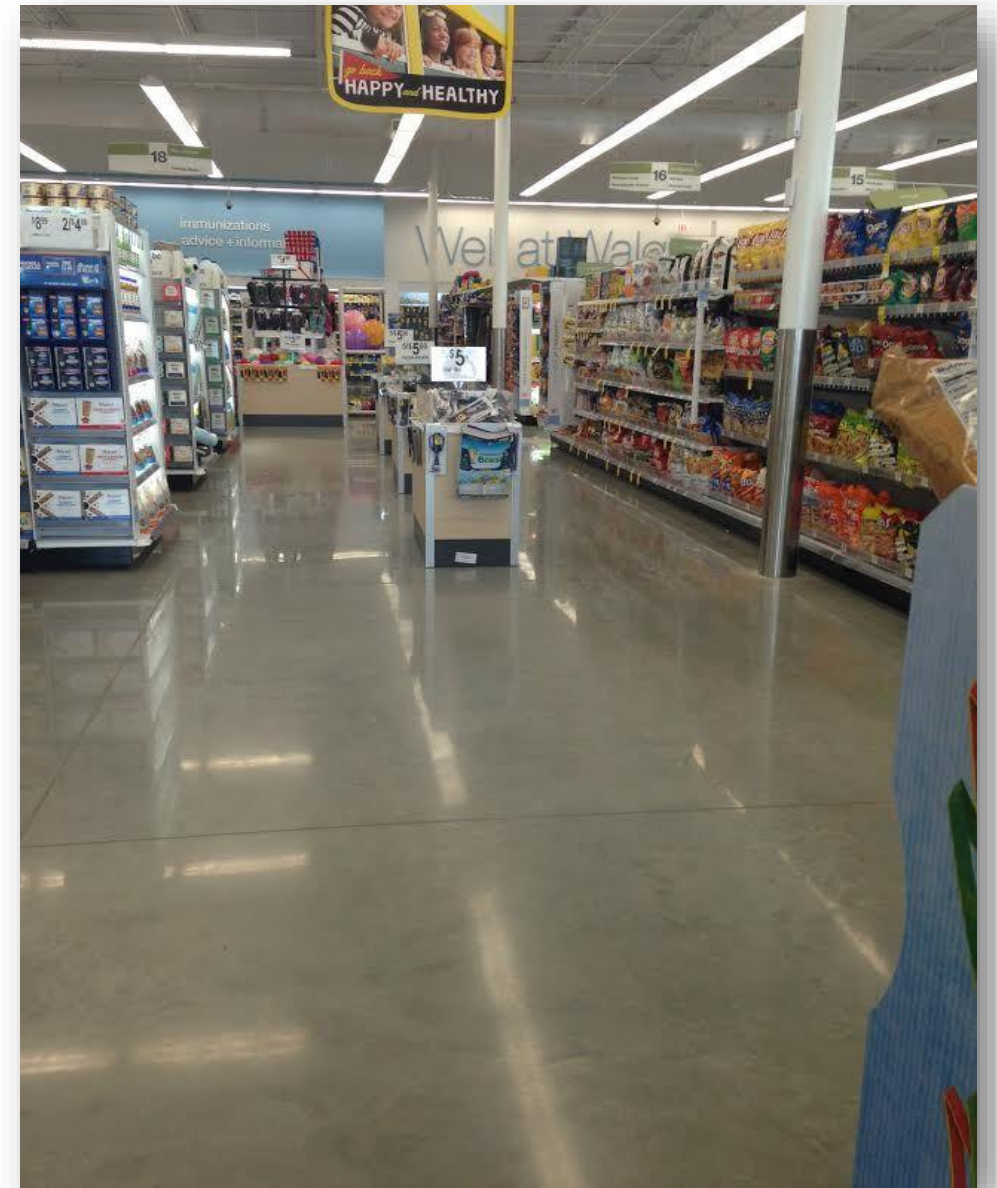
Race Track Wear Aisle After



# Grocery Store Example (Autoscrubber)



# Retail Example (CP30)



# Questions?



Thank  
You!

For more information, click here: [Crete Rx Polished Concrete & Terrazzo Maintenance System.](#)